



REXPO

DEPARTMENT OF RECREATION
MANAGEMENT AND
THERAPEUTIC RECREATION

APRIL 2, 2025
5:30-8:30PM

STUDENT SESSION GUIDE
STUDENT UNION BLUFFS



UWLA



SCHEDULE OF EVENTS

5:00-5:40: Arrival & Introduction in the
Student Union Bluffs

5:40-6:05: Keynote Address: Dart Schmalz

6:05-6:15: Transition to Session One

6:15-7:00: Session One

7:05-7:35: Networking and UWL Well Zone

7:35-7:45: Transition to Session Two

7:45-8:30: Session Two

STUDENTS PLEASE ARRIVE ON TIME

BE SURE TO SCAN THE QR
CODE IN THE UNION & EACH
SESSION FOR ATTENDANCE



ARRIVAL & INTRODUCTION

REXPO is sponsored by the UWL R.E.C. Club and TR Club



5:00-5:40: R.E.C. Club and TR Club Welcomes You!

Greetings and Welcome!

5:40-6:05: Keynote Address by Dart Schmalz



Dorothy "Dart" Schmalz is a Professor and Chair of the Department of Parks, Recreation, and Tourism at the University of Utah. She holds a B.A. in History and Environmental Sciences from The College of Wooster, an M.S. in Leisure Studies from Penn State, and a Ph.D. in Leisure Studies with a minor in health and sport psychology. After completing her Ph.D. in 2004, Dr. Schmalz worked as a Research Associate at Penn State's Childhood Obesity Research Lab. Before joining the University of Utah, she was an Associate Professor at Clemson University. Her research focuses on the impact of prejudice, discrimination, and stigma on health behaviors and, more recently, the effects of nature exposure on human and environmental health. She co-leads the Nature and Human Health - Utah research/practice collaborative and serves on the Executive Board of the Nature and Health Alliance. Dr. Schmalz is passionate about the role of recreation in promoting health, reducing stress, and enhancing mental well-being.

SESSION ONE: 6:15-7:00

Session One Panels



Community/Non-Profit Recreation



Outdoor Recreation and Camps



Tourism/Hospitality and Events



Therapeutic Recreation

NETWORKING AND UWL WELL ZONE 7:05-7:40

Return to Student Union Bluffs



Participate in Well
Zone Activities



Meet
Professionals



Take a Break



Ask Questions

SESSION TWO: 7:45-8:30

Session Two Panels



**Outdoor Recreation
and Camps**



**Community/Non-
Profit Recreation**



**Therapeutic
Recreation**



**Tourism/Hospitality
& Events**

THERAPEUTIC RECREATION

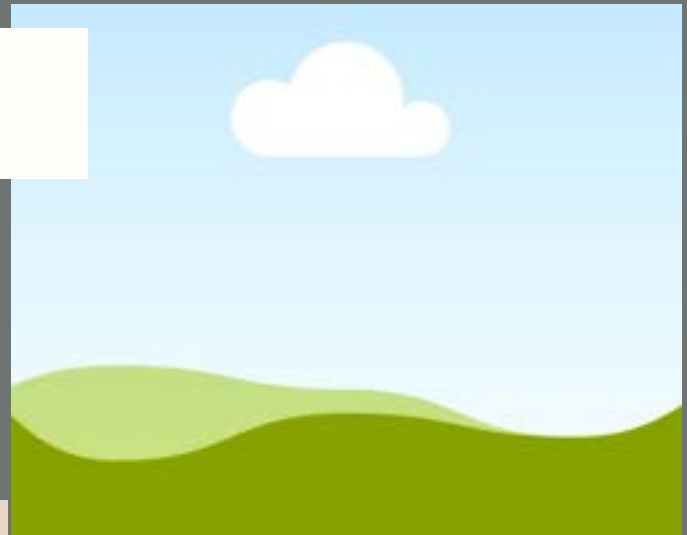


ASHLEY ADAMS

HorseSense Lead Instructor

AIMEE SCHMIDT

Black River Beach Neighborhood
Center--Inclusive Recreation
Coordinator, CTRS-



ASHLEY NOWAK

Chileda - STEP Rec Coordinator

THERAPEUTIC RECREATION



ANNE DAYTON

Recreation Therapist at Lakeview Health Center

MICKELL WILCENSKI

CTRS-Sand Ridge Secure Treatment Center Senior-



KATELYN KEMPF

Sand Ridge Secure Treatment Center

OUTDOOR REC & CAMPS



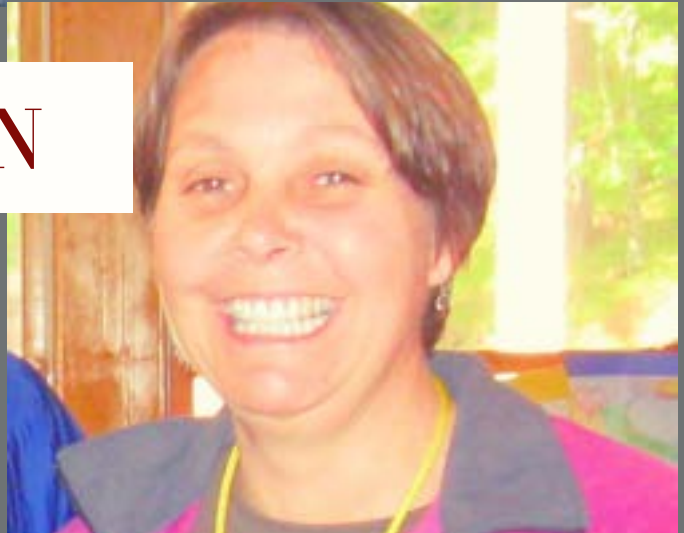
STEPHANIE ENGEL

Sugar Creek Bible Camp – Program Director

MAGGIE BRAUN

Director, WeHaKee Camp for Girls-

A previous member of the American Camp Association National Board of Directors, Maggie has directed multiple camps over 30 years, and has an MBA, is adjunct faculty at UWL in the Environmental Studies program, and teaches leadership at Viterbo University.



MICHAEL WAALEN

Program Director - Camp Lake Wapogasset



OUTDOOR REC & CAMPS



ALEX KVANLI

Assistant Director - Camp Voyager

LINDSEY SCHIED

Associate Director - Green Lake Lutheran Ministries.



ERIN KELLER

Program Director - Lutherdale Camps and Adventures



OUTDOOR REC & CAMPS



SUZI ORLOPP

Director, Camp Wapogasset & Ox Lake

DEB ERMANN

Camp Voyageur Wilderness Adventure



OUTDOOR REC & CAMPS



HANNAH WISEMAN

Camp Director - Camp Anokijig

NIKKI HANSEN

Recreation Program Director - City of La Crosse Parks, Recreation, & Forestry



TOURISM, HOSPITALITY AND EVENTS



FAITH BROWN

Director of Planning & Coordination -
Capella Weddings and events

A.J. FRELS

Executive Director - Explore La Crosse



HAYLEY HARNDEN

Event Services Manager - UWL Student Union



NON-PROFIT & COMMUNITY RECREATION



JEFF KEENAN

Recreational Sports Director - University of Wisconsin-La Crosse

MAGGIE SOLBERG

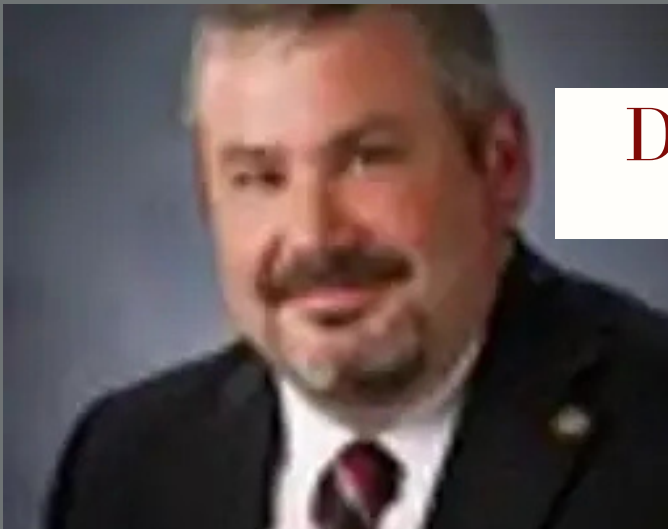
Area Director - West Salem Boys & Girls Club



**DAN WICK & JOSH
MILBRANDT**

Director of Parks & Recreation - City of Onalaska

Recreation Coordinator - City of Onalaska



NON-PROFIT & COMMUNITY RECREATION



KAREN FORTIN

Executive Assistant & HR Generalist, La Crosse Area YMCA

BRETT GULLICKSRUD

Director of Operations - Boys & Girls Clubs of Greater La Crosse



JACKIE WATRY

Holmen Area Director, Boys & Girls Clubs of Greater La Crosse



NON-PROFIT & COMMUNITY RECREATION



ASHLEY JOHNSTON

Assisted Living Resident Care Associate - Eagle
Crest Communities

BRANTLEY RONGLY

Facilitator and Counselor - Girls Scouts
of Wisconsin, Badgerland Council

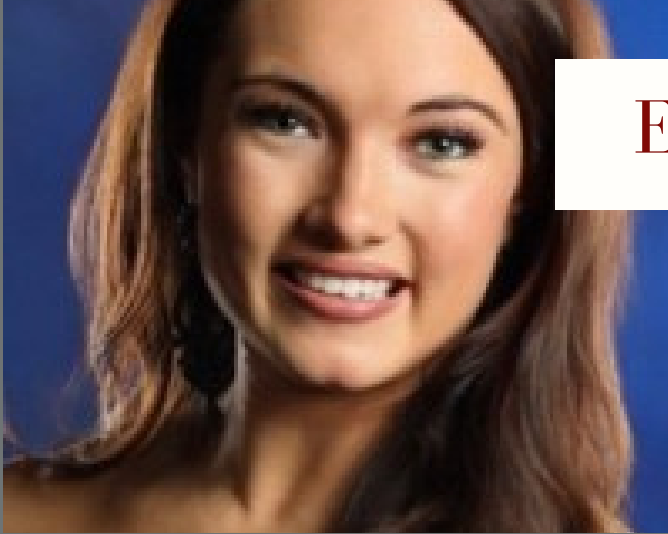


NICK HARNISH

Director of Education, Girl Scouts of
Wisconsin, Baderland Council



NON-PROFIT & COMMUNITY RECREATION



EMMA GARRISON

Recruitment Coordinator, Chileda

JORDAN MILLER

Northern Illinois Special Recreation
Association,

