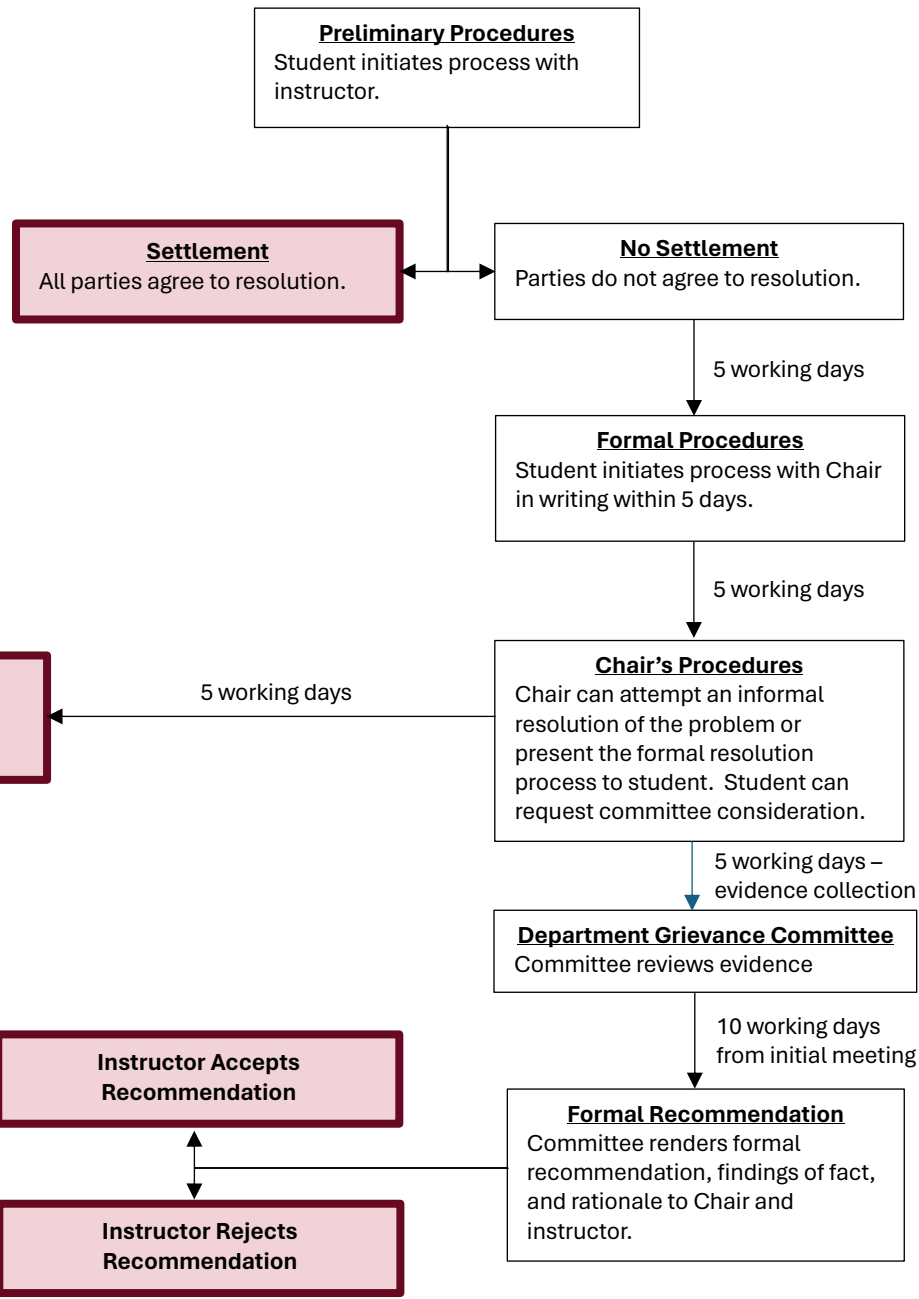


# Grade Appeals Process

- Grounds for Appeal**
- An error was made in grade computation.
  - The grade was based on factors contrary to those stated in the course syllabus or a reasonable interpretation of it.
  - The grade includes a penalty for actions involving the freedom of written or spoken classroom expression.
  - The grade involved some breach of federal or state constitutional protections, laws, Universities of Wisconsin or UW-La Crosse policies.

- Timeline for Appeals**
- Appeals must be initiated no later than the 10<sup>th</sup> working day of the next regular semester (Fall/Spring)
  - If preliminary procedure does not reach settlement, student can petition in writing to the Chair within five (5) working days.
  - Chair will attempt an informal resolution or present formal resolution process to student within five (5) working days.
  - If student wants to proceed through the formal resolution process, the Chair will convene a department grievance committee within five (5) working days.
  - Ten (10) days from initial meeting date, committee will present recommendation to Chair and instructor.



- University Complaint**
- If the student believes, at the end of the process, that the process was not followed correctly, they can file a University Complaint with the Student Life Office.